



# VITAL

**USAGE AND  
MAINTENANCE MANUAL  
CONVEYOR TYPE  
DISHWASHING MACHINE**



> VBY1500L



> VBY1500R

## **PRESENTATION**

DEAR CUSTOMERS,

- To get the best yield of our products that are in compliance with the International Standards, we highly recommend you to read the user's manual and have it read to your users for long and continuous usages.
- This manual contains important informations about the secure installation, usage and maintenance of the product and necessary remarks to make the most efficient usage of your device.
- Keep this manual in an easily accessible and safe place to use when necessary.
- The manufacturer cannot be held responsible for any damages from incorrect usage of the device, to people, the environment, or other materials resulting from translation or printing of this booklet.

## SYMBOLS AND THEIR MEANINGS



### **READ THE MANUAL**

Before using the device, read the usage and maintenance manual carefully and keep it in an accessible place at all times.



### **NOTE**

Indicates informations and tips to consider for efficient and trouble-free operation of the appliance.



### **WARNING**

Emphasizes the dangers that can cause injuries. Please follow carefully the instructions and pay attention to such situations.



### **ELECTRICAL DANGER**

This icon draws attention to possible electrical dangers. Failure to follow the safety instructions may result in injury or death.



### **GROUNDING**

Indicates that grounding is necessary.

## INDEX

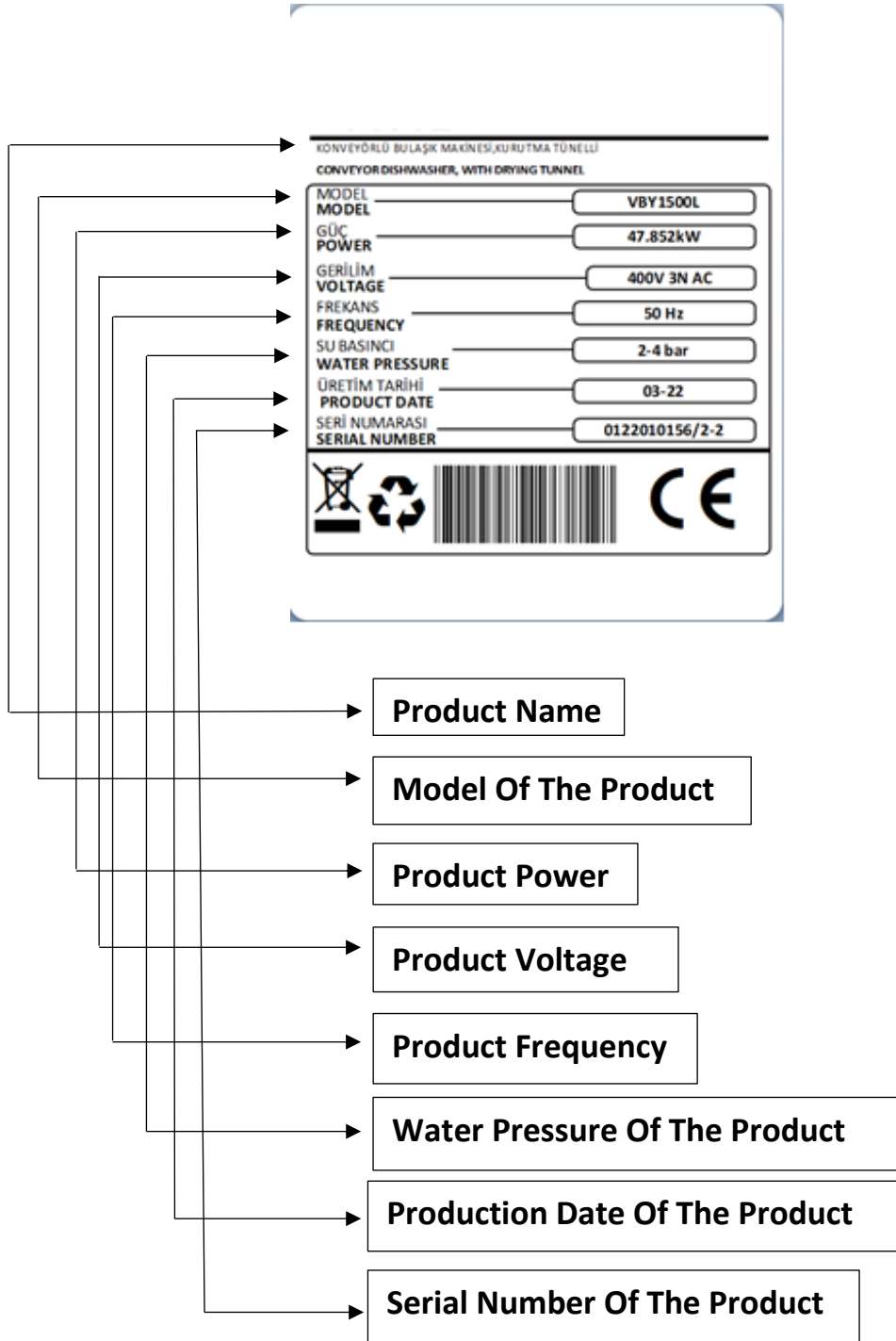
|   |    |
|---|----|
| PRESENTATION.....   | 1  |
| SYMBOLS AND THEIR MEANINGS.....   | 2  |
| INDEX.....  | 3  |
| SAFETY DETAILS.....   | 4  |
| LABEL DETAILS.....  | 5  |
| TECHNICAL SPECIFICATIONS.....   | 6  |
| TRANSPORTATION, PLACEMENT AND READY TO INSTALL.....                             | 9  |
| PERSONEL PROTECTIVE EQUIPMENT.....  | 10 |
| ELECTRICAL CONNECTION.....  | 11 |
| WATER CONNECTION.....   | 12 |
| CONTROL PANEL.....  | 13 |
| USAGE.....  | 13 |
| 1-) SWITCHING ON.....   | 14 |
| 2-) SWITCHING OFF.....  | 15 |
| CLEANING.....   | 15 |
| MAINTENANCE AND MALFUNCTION.....  | 16 |
| PROBLEMS AND SOLUTIONS.....   | 16 |
| PERMANENT RISKS.....  | 17 |
| THINGS TO BE DONE FOR DAILY, MONTHLY AND ANNUAL MAINTENANCE OF THE MACHINE..... | 17 |
| WARRANTY CONDITIONS.....  | 18 |
| OUT OF WARRANTY CASES.....  | 19 |
| ELECTRICAL CIRCUIT SCHEME.....  | 20 |
| AUTHORIZED SERVICE START UP PAGE.....   | 23 |
| START UP PAGE.....  | 23 |
| CONTACT.....  | 24 |

## SAFETY DETAILS

- Do not expose the device to direct sunlight.
- The instructions should be analysed before the installation and the usage of the device.
- The device can only be used for professional purpose. The installation and the maintenance should be carried out by the qualified staff authorized by the manufacturer.
- It should not be interfered without the presence of the manufacturer or the authorized service.
- The device and its parts cannot be used for any other purpose.
- Never let the power cable come into contact with heat sources or sharp surfaces.
- The power cable must not be folded, bent or tangled and must always remain fully unrolled.
- Do not move or lift the appliance while it is operating.
- Do not place any object on the appliance.
- Never touch the plug with wet or damp hands.
- Do not interfere with the electrical parts of the device.
- In case of any error that may occur, all electrical and water connections must be disconnected and service must be requested.
- The installation and the maintenance should be carried out by the qualified staff authorized by the manufacturer. Serious danger for the user can arise due to incorrect installations, maintenances or repairs, and the manufacturer cannot be held responsible.
- Do not wash the device with pressurized water.



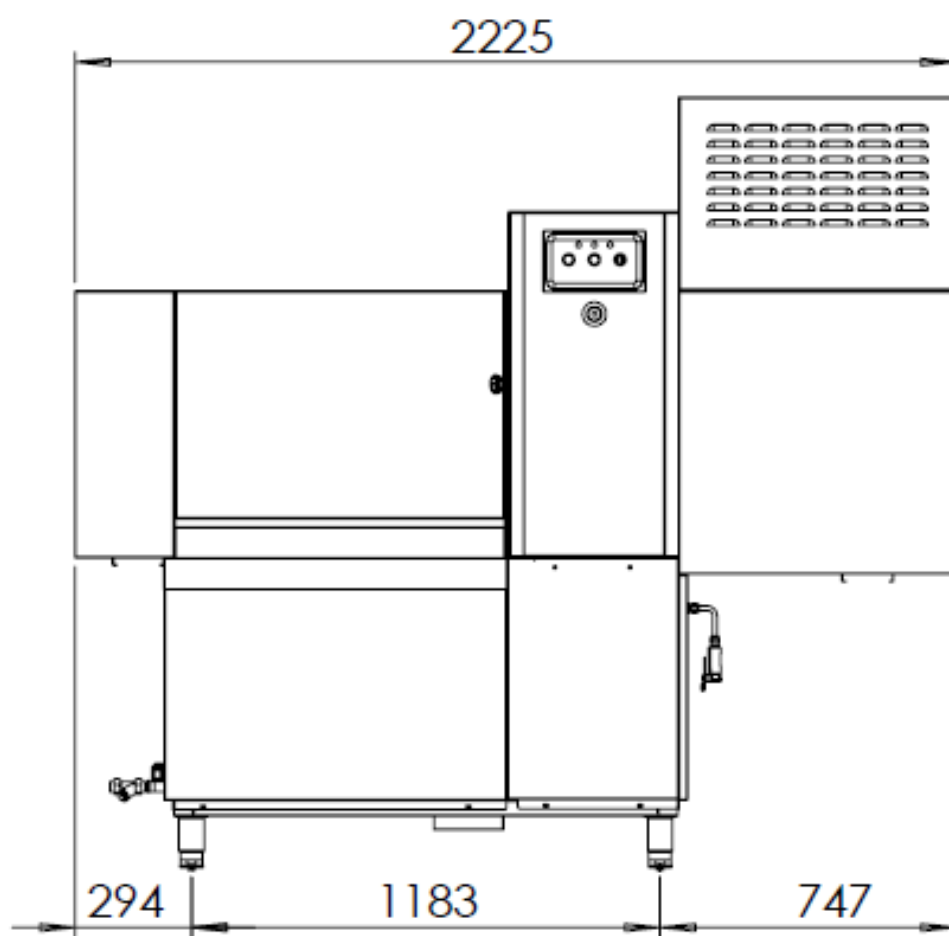
## LABEL DETAILS



## TECHNICAL SPECIFICATIONS

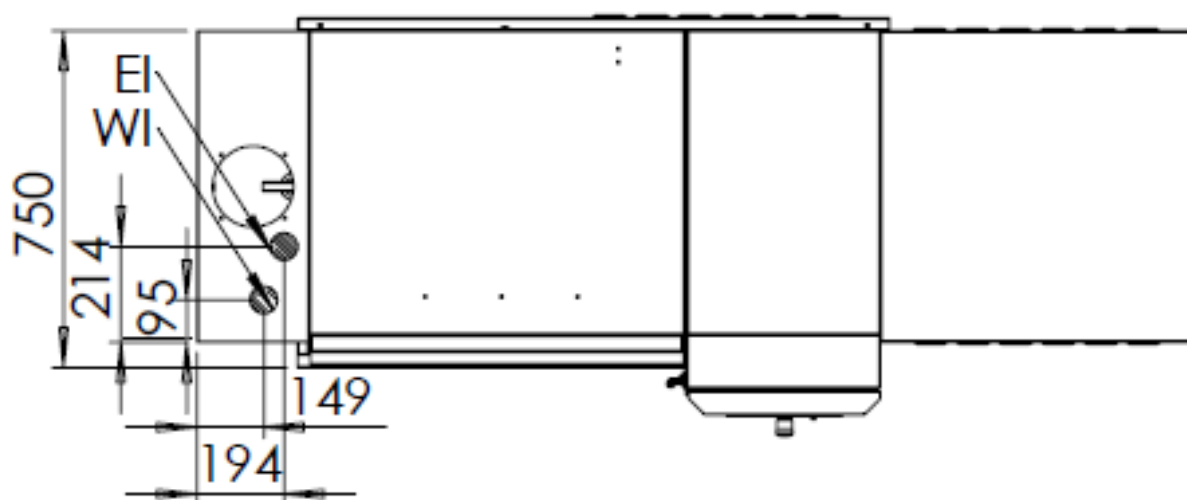
| PRODUCT CODE                    |   |        | VBY2000R             | VBY2000L             |
|---------------------------------|---|--------|----------------------|----------------------|
| DIMENSIONS<br>(Mm)              | A | WIDTH  | 2010                 | 2010                 |
|                                 | B | DEPTH  | 800                  | 800                  |
|                                 | C | HEIGHT | 1900                 | 1900                 |
| ELECTRIC POWER                  |   |        | 47,852 kW            | 47,852 kW            |
| BOILER HEATING POWER            |   |        | 27 kW                | 27 kW                |
| TANK HEATER POWER               |   |        | 9 kW                 | 9 kW                 |
| KURUTMA ISITMA GÜCÜ             |   |        | 9 kW                 | 9 kW                 |
| CONVEYOR MOTOR POWER            |   |        | 0,55 kW              | 0,55 kW              |
| DRYING MOTOR POWER              |   |        | 0,462 kW             | 0,462 kW             |
| PRE-WASH PUMP POWER             |   |        | -                    | -                    |
| WASHING PUMP POWER              |   |        | 1,47 kW              | 1,47 kW              |
| RINSE PUMP POWER                |   |        | 0,37 kW              | 0,37 kW              |
| DISCHARGE PUMP POWER (OPTIONAL) |   |        | -                    | -                    |
| WASHING TANK VOLUME             |   |        | 70 L                 | 70 L                 |
| PRE-WASH TANK VOLUME            |   |        | -                    | -                    |
| BOILER VOLUME                   |   |        | 18 L                 | 18 L                 |
| WASHING WATER TEMPERATURE       |   |        | 55-60                | 55-60                |
| RINSE WATER TEMPERATURE         |   |        | 80-85                | 80-85                |
| WATER INLET                     |   |        | 3/4"                 | 3/4"                 |
| WATER PRESSURE                  |   |        | 2-4 bar              | 2-4 bar              |
| WATER HARDNESS                  |   |        | 0-10 French hardness | 0-10 French hardness |
| CAPACITY                        |   |        | 1500 Plates / Hour   | 1500 Plates / Hour   |
| CABLE CROSS SECTION             |   |        | 5x16 mm <sup>2</sup> |                      |
| ELECTRIC INPUT                  |   |        | 380-400 VAC 3N 50 HZ |                      |
| WEIGHT                          |   |        | 280 Kg               |                      |

A



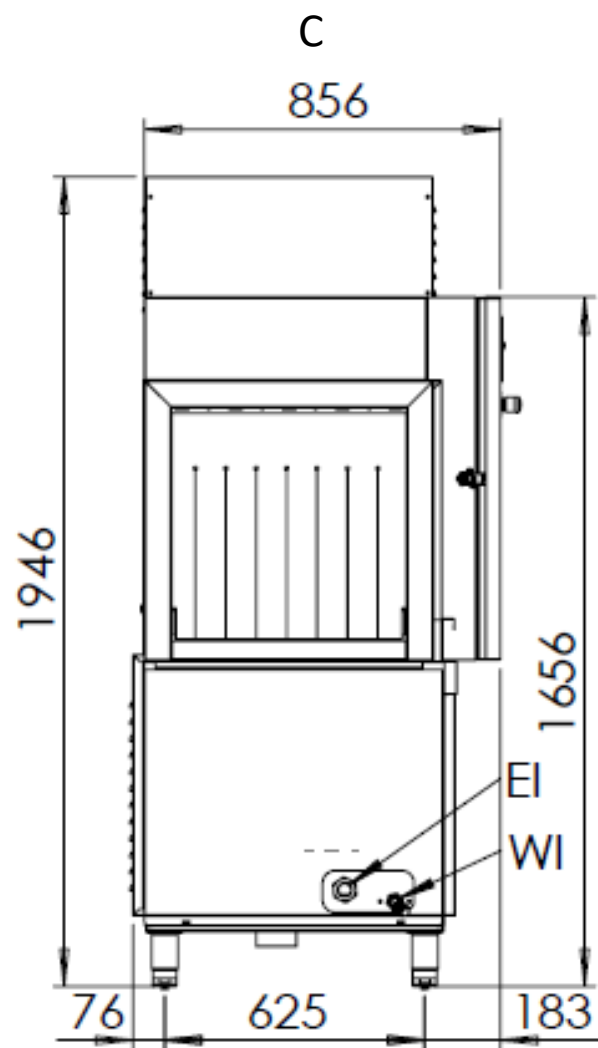
VBY1500L

B



VBY1500L





VBY1500L

## TRANSPORTATION, PLACEMENT AND READY TO INSTALL

- Do not tilt the device during the transportation, carry it upright.
- Use a suitable vehicle to avoid any kind of damages.
- Do not push or drag the device to bear.
- When transporting by pallet jack or forklift, make sure to not damage the device.
- Carry the device with its packaging until the installation area.
- The device must be installed in accordance with the instructions.
- An electrical connection in accordance with the technical specifications of the device must be installed in the installation area.
- A water connection in accordance with the technical specifications of the device should be established in the installation area.
- Make sure that the product installation area is a flat surface. In case of installation on uneven floors, the product will not be able to receive water properly.

### What's included inside the package?

- 1 50x50 dishwasher plate basket
- 1 50x50 dishwasher glass basket
- 1 50x50 dishwasher cutlery basket
- 1 drain hose (should be connected by the service.)
- 1 clean water inlet hose (should be connected by the service.)
- 1 usage and maintenance manual



Please observe the regulations in your country if you wish to dispose of the packaging. Recycle the usable packaging.



The device installed by the authorized service cannot be moved, connection hoses cannot be extended or changed except by the authorized service.

## PERSONEL PROTECTIVE EQUIPMENT

Below are the personal protective equipment (PPE) for the operations during the machine's lifespan and the processes in which they will be used.

During normal daily use, the user must wear a heat-resistant glove that will protect the hands. Chemical risk and life-threatening may occur as a result of equipment not being used in the procedures specified by users.

|                  | PROTECTIVE CLOTHING | PROTECTIVE SHOES | PROTECTIVE GLOVES | PROTECTIVE GLASSES | PROTECTIVE EARPHONES | PROTECTIVE MASK | PROTECTIVE HARD HAT |
|------------------|---------------------|------------------|-------------------|--------------------|----------------------|-----------------|---------------------|
| TRANSPORT        |                     | X                | O                 |                    |                      |                 | O                   |
| CARRYING         |                     | X                | O                 |                    |                      |                 |                     |
| UNPUCKING        |                     | X                | O                 |                    |                      |                 |                     |
| INSTALLATION     |                     | X                | O                 |                    |                      |                 |                     |
| DAILY USE        | X                   | X                | X                 |                    |                      |                 |                     |
| PLACEMENT        | O                   | X                |                   |                    |                      |                 |                     |
| ROUTINE CLEANING | O                   | X                | X                 | X                  |                      |                 |                     |
| SPECIAL CLEANING | O                   | X                | X                 | X                  |                      |                 |                     |
| MAINTENANCE      | O                   | X                |                   |                    |                      |                 |                     |
| DISASSEMBLY      | O                   | X                |                   |                    |                      |                 |                     |

**O= IT SHOULD BE USED WHEN NECESSARY.**

**X=MUST BE USED PRECISELY.**

## ELECTRICAL CONNECTION

- Technical specification section should be analysed for the appropriate cable to be used for the electrical connection of the device.
- The electrical supply circuit must be done by authorized staff. Before installation, make sure that your fitment meets the requirements. The device should absolutely not be used without grounding.
- The electrical voltage must be stable for the proper fonction of the device. If the malfunction is caused by the voltage, the replacement of these parts are considered “out of warranty”. Fault detection is based on the service declaration.
- To prevent the device from any short circuit and overcurrent, the device must be supplied with the appropriate fuse control.



Do not operate the device without grounding.



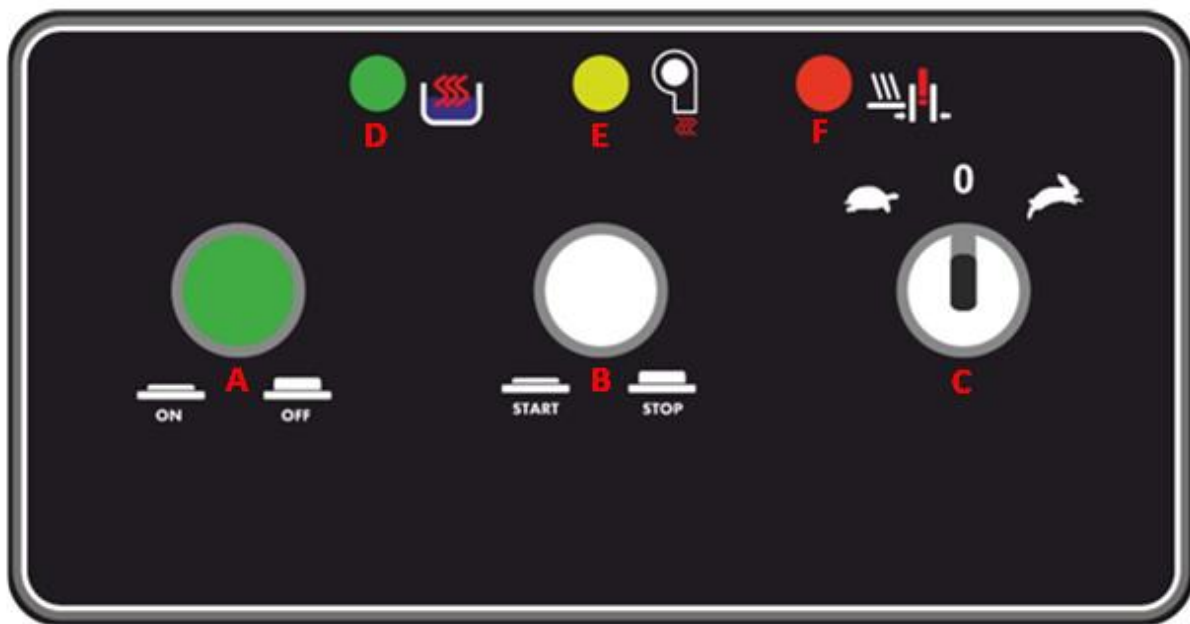
The power line to be connected to the device must have a suitable grounding connection and cross section.

## **WATER CONNECTION**

- Make the connection suitable for the water inlet located on the back of the device.
- To operate at the best performance, the water inlet pressure should be 2-4 bars and 0-10 French hardness.
- If your device is subjected to a pressure below the recommended working pressure, the water filling will be slow and the rinsing will not be done properly.
- Improper water hardness will cause calcification and damage the machine. In addition, the required cleaning performance will not be achieved.
- There must be a water drain on the area where the device will be connected.

| <b>Measured Pressure Value</b> | <b>Action to be Done</b>                |
|--------------------------------|---|
| Between 0 – 2 bars             | Hydrophore must be installed.           |
| Between 2 – 4 bars             | No additional action is required.       |
| 4 bars and over                | Pressure regulator should be installed. |

## CONTROL PANEL



|          |                                 |
|----------|---------------------------------|
| <b>A</b> | Switch-on/off button            |
| <b>B</b> | Conveyor speed selection switch |
| <b>C</b> | Washing Start-Stop button       |
| <b>D</b> | Heating activated lamp          |
| <b>E</b> | Drying fan activated light      |
| <b>F</b> | Reducer motor jam lamp          |

## USAGE

- The device is designed for Professional usage and should only be used by trained personnel.
- If the detergent and rinse pump connections are made properly, the device will automatically take detergent and rinse in each wash.



Pre-washing of the dishes must be done before being put in the machine with a sponge and pressurized water. Otherwise, large pieces may block the the crumb filters and washing arms which will damage the machine.

- Make sure to use baskets suitable for the type of dishes to be washed.
- Small items (teaspoons etc.) placed in the washing baskets may cause the conveyor machine to malfunction.
- If the machine door is opened during washing or rinsing, the washing process will stop.



Never operate the machine without the crumb filters.

### **Use of Detergent and Polisher**

- The hose coming out of the detergent pump should be connected to the washing tank at the back of the machine. The adjustment of the detergent pump must be done by authorized persons. The adjustments should not be changed. The adjustment to be made by unauthorized persons may increase the consumption of detergent and cause the dishes to come out of the machine with detergent and dirty appearance.
- The hose coming out of the rinse aid pump must be connected to the rinse aid inlet on the boiler.
- If the detergent setting is low, it will cause the dishes not to come out with the desired cleaning.

### **1-) Switching On**

- Turn on the fuse to which the device is connected.
- Open the water inlet tap.
- Close the doors of the device.
- Press on the ON-OFF button to operate the device.
- Water intake process will start after pressing the ON-OFF button. The boiler will start to heat after the water intake is completed. You may observe it with the heating on light (D) on the control panel. When the heating is completed, the lamp will turn off after the washing tank reaches 55-60°C. A good result cannot be obtained from washing without warming up the washing water.
- Adjust the washing speed with the conveyor speed selection switch (B).
- You can start the washing process by pressing the washing start button (C)

## 2-) Switching Off

- Turn off the device by pressing on the ON-OFF button located on the control panel.
- Turn off the water inlet tap.
- Turn off the fuse to which the energy supply is made for your safety.

## CLEANING

### Cleaning of the external part

- When cleaning the device, make sure to prevent water from entering in the electrical parts.
- Do not wash the device with high pressure water.
- Clean the external surface with a cloth soaked in soapy water.
- Do not use abrasive detergent or wire brushes when cleaning the device's surface.

### Cleaning of the internal part

- Open the doors, remove the curtains and clean them.
- Take out the crumb filters and clean them.
- If there is any clogging, remove the washing arms and rinse them with water.
- Remove the filters and filter elements from the tank drain bases.
- Clean the interior of the machine with a sponge and brush. If necessary, you may wash the interior with a hose.
- Clean the filters located in front of the pump suction with a brush.
- Place the strainer elements back on the tank drain bases.
- Re-insert wash arms and re-attach the curtains.



Read the instructions before turning the device on and off.



## MAINTENANCE AND MALFUNCTION

- All connections and repairs must be carried out by the authorized service centers, otherwise, your device will be out of warranty.
- All connections and repairs must be done by the Authorized Service. Otherwise, your device will be done out of warranty.

### Problems and Solutions

| PROBLEM   | SOLUTION   |
|---|--|
| The wash tank does not heat                                       | Make sure that the fuse to which the main power supply is made is on.<br>Check if the ON-OFF button is pressed.<br>Check if there is water in the tank.<br>If the device does still not heat, please contact the <b><u>AUTHORIZED SERVICE.</u></b>                   |
| Gearbox motor jam lamp is on and the device is not working.       | There is a jam in the conveyor, please contact the <b><u>AUTHORIZED SERVICE.</u></b>   |
| The device is not receiving water.                                | Check if the tap to which the water connection is made is open.<br>Check if the ON-OFF button is pressed.<br>If the device does still does not receive water, please contact the <b><u>AUTHORIZED SERVICE.</u></b>   |
| Drying fan lamp does not light during washing.                    | Check if the drying fan is working. If the fan is working, the lamp is out of order. The lamp must be changed. If the fan does not work, please contact the <b><u>AUTHORIZED SERVICE.</u></b>  |
| The device receives water continuously.                           | There is a problem with the device water level measurement system. Please contact the <b><u>AUTHORIZED SERVICE.</u></b>  |
| The device does not operate although the start button is pressed. | Make sure that the fuse with which the main power supply is made is on.<br>Check if the device ON-OFF button is pressed.<br>Make sure that the device cover is closed.<br>If the device still does not operate, please contact the <b><u>AUTHORIZED SERVICE.</u></b> |



#### NOTE

Please contact the authorized service in case of malfunction.

## PERMANENT RISKS

The machine has certain risks that cannot be eliminated by design or by the installation of adequate protection devices. Permanent risks are listed below for full customer information. It is therefore strictly forbidden to do it within these risks.

| PERMANENT RISKS | EXPLANATION  |
|-----------------|--|
| Slip and Fall   | The technician may slip and fall due to dirt and water on the floor.   |
| Burns           | It occurs when the technician consciously or unconsciously touches the area with a hot surface warning and tries to pick up the trays without gloves.  |
| Electric Shock  | It occurs due to maintenance without cutting off the electricity and placing the product on a wet floor.   |
| Chemical        | It occurs as a result of contact with chemical substances without taking adequate precautions. To prevent this situation, the safety cards and labels of the products should be read. (Chemical substance: Detergent, rinse aid, etc.) |

## THINGS TO BE DONE FOR DAILY, MONTHLY AND ANNUAL MAINTENANCE OF THE MACHINE

### DAILY

- 1) General cleaning of the machine and the surrounding area is required.

### MONTHLY

- 1) Parts of the devices should be checked, loosened and deformed ones should be tightened or replaced.

### YEARLY

- 1) Mechanical parts should be checked for breakage and deformation.
- 2) The legibility of labels and symbols should be checked.
- 3) Connection cable and plug are damaged, rotten, broken, etc. Things should be checked for.

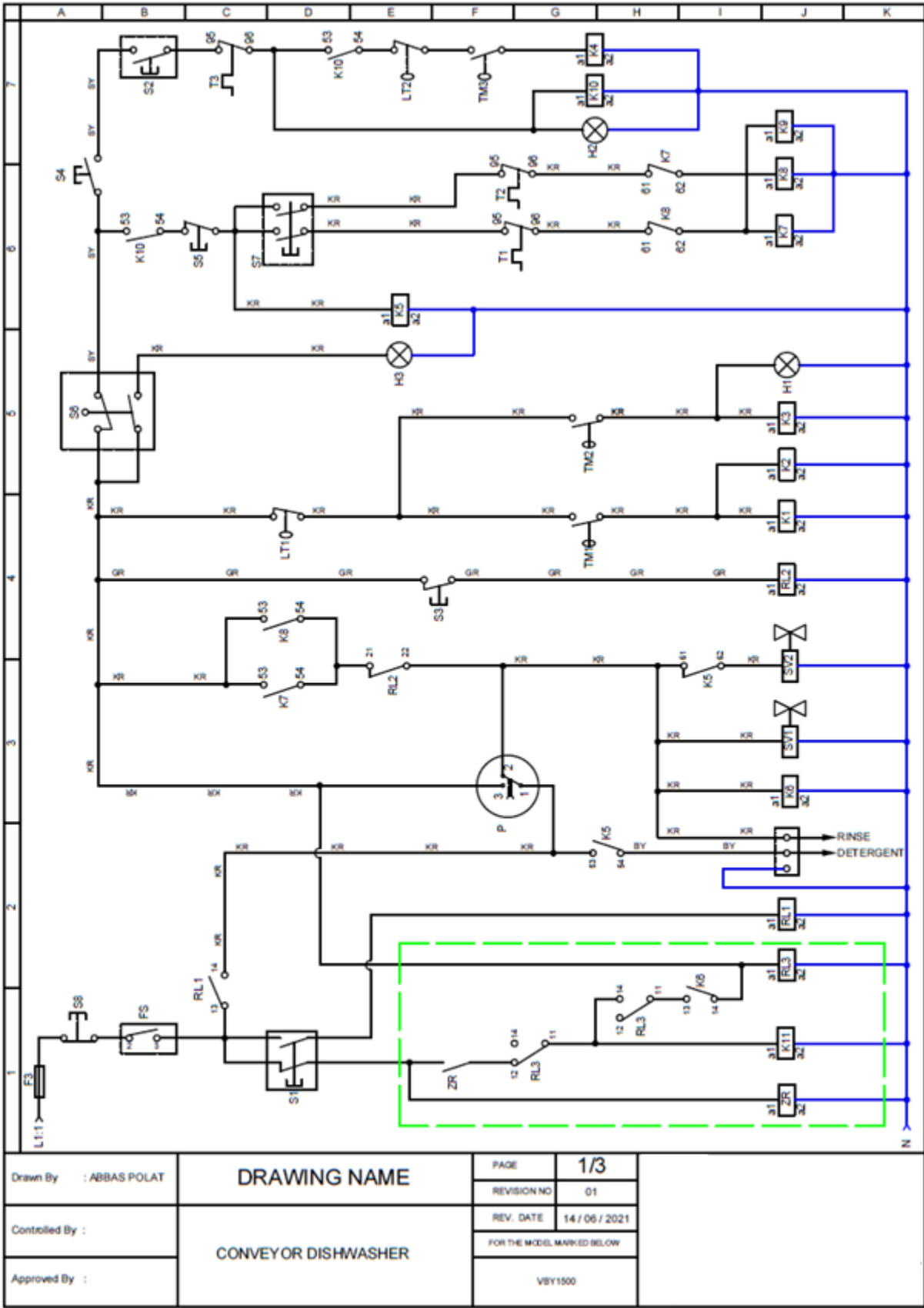
## WARRANTY CONDITIONS

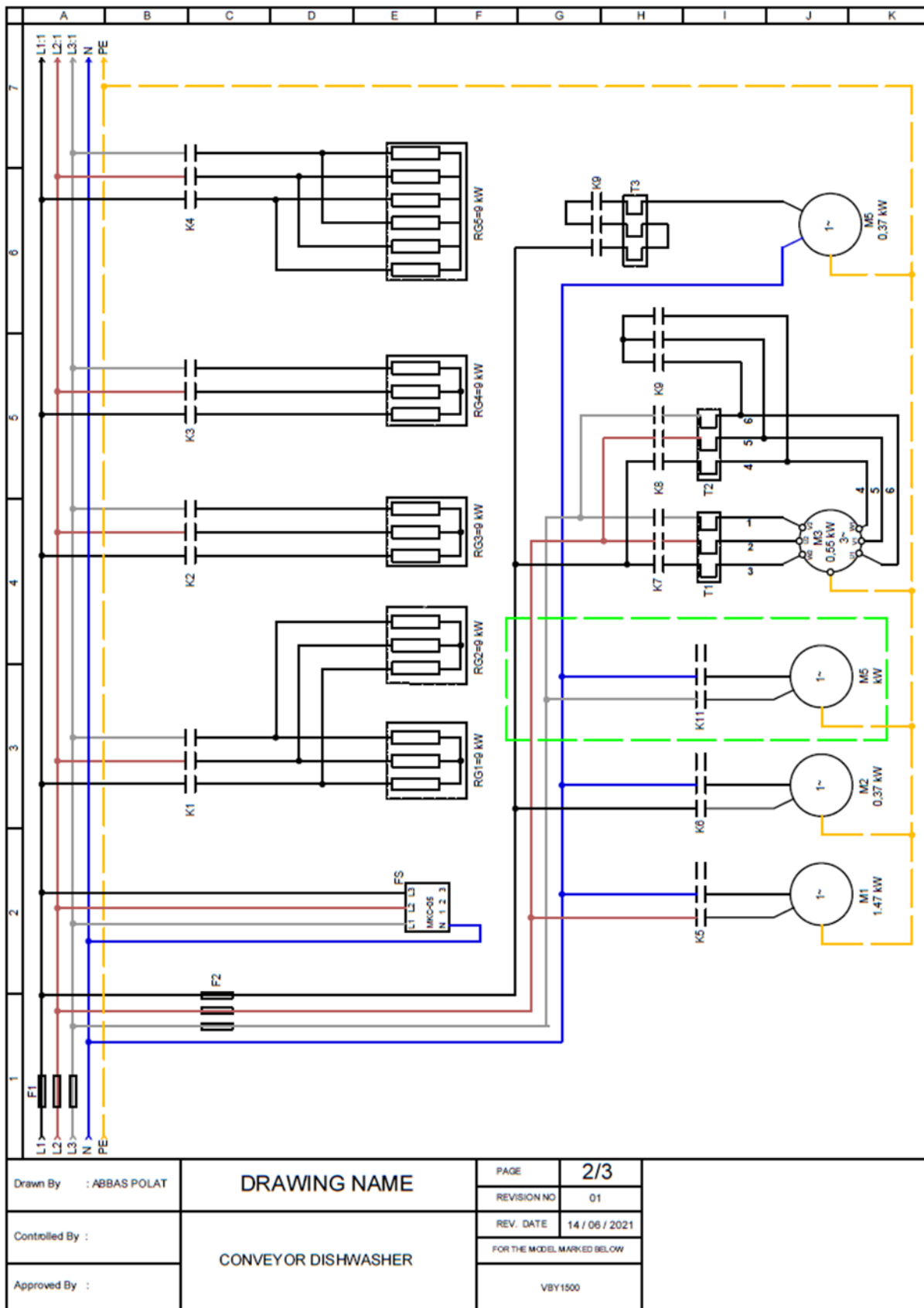
- According to the consumer rights law and commercial law of the Ministry of Industry, except in a special case of agreement, sold industrial products by our company has one (1) year of warranty and that period starts from the delivery date of the product.
- The warranty includes all the components of the device against fabrication or faulty workmanship, eliminations of the problems or malfunctions of the device caused by the workmanship and installation errors, replacement of non-repairable parts or the mending of repaired parts that can be reused. It also includes repairings or changes of the components by the authorized personnel, or the labor fee due to the problem under the warranty.
- In order for the warranty conditions to be valid, the maintenance of the components fixed to the device, the maintenance of the product, as indicated in the user's manual, should be done yearly and monthly and the information form must be held after the maintenance to be presented when required.
- The document of the replacement of the component has to be presented for warranty claim parts.
- In order to sustain the warranty period, the paid periodic maintenance has to be done by the authorized service and the information form must be held to be presented when required.
- In case of the malfunctions under the warranty period, the time spent in the repairment of the device is added to the warranty period. The repair can be maximum 30 (thirty) days. This period starts when the device is on the service station. In case of the absence of this situation, the period will start when the manufacturer or the importer is notified by the product seller.
- In accordance with the regulations of the warranty document implementation fundamentals published by the Ministry of Industry, the warranty deed of the industrial products are the purchase invoices.
- If there is any kind of malfunctions due to both the material and the workmanship, or assembly faults under the warranty period, the necessary replacement and repairing will be done by our authorized personnel without any charge.

## OUT OF WARRANTY CASES

- If the product is used above its intended purpose, standards or capacity specified by the manufacturer.
- In case of the bad locationing of the product, continuous usage and unhealthy environment (ex: required ventilation), not suitable floor or flat platform, lack of convenient electrical connection,
- If the product has not been used as explained in the instruction manual,
- If the fault is caused by inconvenient, wrong or careless usage,
- If the malfunction is caused by fluctuations in the mains power, a stroke or a meteor lightening, a fire, a flood, an earthquake or similar cases,
- If the special tools and equipments installed or the maintenance and repair are made by any other person than the authorized person,
- When requesting a service, if the installation-start documents or purchase invoices of the products are not presented,
- If the informations on the documents of the installation, start or maintenance has been destroyed or changed,
- If the paid annual or the contractual periodic maintenance of the product has not been done on time by the authorized personnel,
- If unoriginal spare parts have been used,
- Notifications to our authorized services under the warranty period about the malfunctions that could not have been repaired, will make the time-out of the warranty stop only for that specific malfunction. In this case, the authorized service will inform about the compensation or the non-troubleshooting and the expanded warranty period will end in 3 months in any cases,
- All parts that may be abraded in time such as gaskets, electronic card, doorhandle and mechanism, serigraphy product tag, cables, resistance etc will be replaced in exchange of a fee.
- Damages caused by the unnecessary loss of time, the maleficence, the revenue loss, or the conduction of the product from the defective location to another,
- Malfunctions of the product due to squalidity are not covered by the warranty,
- The methods to be followed about the fault detection and elimination are determined completely by MUTAŞ's technical service management and the service matter is taken as basis for the determination of the malfunction.

ELECTRICAL CIRCUIT SCHEME





|   | A   | B | C | D | E | F | G | H | I | J | K |
|---|---|---|---|---|---|---|---|---|---|---|---|
| 1 | RG1: 9 KW BOILER RESISTANCE<br>RG2: 9 KW BOILER RESISTANCE<br>RG3: 9 KW BOILER RESISTANCE<br>RG4: 9 KW TANK HEATER RESISTANCE<br>RG5: 9 KW DRYING HEATERS<br>M1: 1.47 KW WASHING PUMP<br>M2: 0.37 KW RINSE PUMP<br>M3: 0.55 KW CONVEYOR MOTOR<br>M4: 0.37 KW DRYING MOTOR<br>M5: DRAIN PUMP<br>T1: CONVEYOR MOTOR THERMAL RELAY<br>T2: CONVEYOR MOTOR THERMAL RELAY<br>T3: DRYER MOTOR THERMAL RELAY<br>FS: PHASE PROTECTION RELAY<br>F1: 100 A MAIN INPUT FUSE<br>F2: 16 A MOTOR-PUMP FUSE<br>F3: 6 A CONTROL FUSE<br>K1: BOILER RESISTANCE CONTACTOR<br>K2: BOILER RESISTANCE CONTACTOR<br>K3: TANK HEATER CONTACTOR<br>K4: DRYING RESISTANT CONTACTOR<br>K5: WASH PUMP CONTACTOR<br>K6: RINSE PUMP CONTACTOR<br>K7: CONVEYOR MOTOR HIGH SPEED CONTACTOR                  |   |   |   |   |   |   |   |   |   |   |
| 2 | RG1: 9 KW BOILER RESISTANCE<br>RG2: 9 KW BOILER RESISTANCE<br>RG3: 9 KW BOILER RESISTANCE<br>RG4: 9 KW TANK HEATER RESISTANCE<br>RG5: 9 KW DRYING HEATERS<br>M1: 1.47 KW WASHING PUMP<br>M2: 0.37 KW RINSE PUMP<br>M3: 0.55 KW CONVEYOR MOTOR<br>M4: 0.37 KW DRYING MOTOR<br>M5: DRAIN PUMP<br>T1: CONVEYOR MOTOR THERMAL RELAY<br>T2: CONVEYOR MOTOR THERMAL RELAY<br>T3: DRYER MOTOR THERMAL RELAY<br>FS: PHASE PROTECTION RELAY<br>F1: 100 A MAIN INPUT FUSE<br>F2: 16 A MOTOR-PUMP FUSE<br>F3: 6 A CONTROL FUSE<br>K1: BOILER RESISTANCE CONTACTOR<br>K2: BOILER RESISTANCE CONTACTOR<br>K3: TANK HEATER CONTACTOR<br>K4: DRYING RESISTANT CONTACTOR<br>K5: WASH PUMP CONTACTOR<br>K6: RINSE PUMP CONTACTOR<br>K7: CONVEYOR MOTOR HIGH SPEED CONTACTOR                  |   |   |   |   |   |   |   |   |   |   |
| 3 |   |   |   |   |   |   |   |   |   |   |   |
| 4 |   |   |   |   |   |   |   |   |   |   |   |
| 5 |   |   |   |   |   |   |   |   |   |   |   |
| 6 | K8: CONVEYOR MOTOR LOW SPEED CONTACTOR<br>K9: CONVEYOR MOTOR CONTACTOR<br>K10: DRYING MOTOR CONTACTOR<br>K11: DRAIN PUMP CONTACTOR<br>S1: ON-OFF BUTTON<br>S2: WASH-DRY START BUTTON<br>S3: RINSE SWITCH<br>S4: COVER SWITCH<br>S4-1: DOOR SWITCH<br>S5: BENCH SWITCH<br>S6: CONVEYOR SWITCH<br>S7: CONVEYOR MOTOR SPEED SELECTION SWITCH<br>RL1: CONTROL RELAY<br>RL2: RINSE RELAY<br>RL3: DRAIN RELAY<br>ZR: DISCHARGE TIME RELAY<br>P1: WASH TANK WATER LEVEL SENSOR<br>SV1: RINSE SOLENOID VALVE<br>SV2: WASHING SOLENOID VALVE<br>LT1: BOILER SAFETY THERMOSTAT<br>LT2: DRYING SAFETY THERMOSTAT<br>TM1: BOILER THERMOSTAT<br>TM2: BOILER THERMOSTAT<br>TM3: DRYING THERMOSTAT<br>H1: BOILER HEAT ON LAMP<br>H2: DRYING FAN ON LAMP<br>H3: CONVEYOR MOTOR WARNING LAMP |   |   |   |   |   |   |   |   |   |   |
| 7 |   |   |   |   |   |   |   |   |   |   |   |

KR: RED  
 BY: WHITE  
 SY: BLACK  
 Y\$: GREEN  
 GR: GREY

|                        |  |                            |                |  |
|------------------------|--|----------------------------|----------------|--|
| Drawn By : ABBAS POLAT | <b>DRAWING NAME</b><br><br>CONVEYOR DISHWASHER | PAGE                       | 3/3            |  |
|                        |  | REVISION NO                | 01             |  |
| Controlled By :        |  | REV. DATE                  | 14 / 06 / 2021 |  |
|                        |  | FOR THE MODEL MARKED BELOW |                |  |
| Approved By :          |  | VBY1500                    |                |  |

## AUTHORIZED SERVICE START UP PAGE

### Start Up Page

- The model and serial number of your device are shown on the “Technical Data” label affixed to the device.
- Select the technical data according to the device model on the nameplate.

**MUST BE FILLED BY AUTHORIZED SERVICE!**

|                                    |  |
|------------------------------------|--|
| <b>COMPANY INFORMATIONS</b>        | :  |
| <b>PRODUCT</b>                     | :  |
| <b>MODEL</b>                       | :  |
| <b>SERIAL NUMBER</b>               | :  |
| <b>PRODUCTION DATE</b>             | :  |
| <b>SERVICE STAMP AND SIGNATURE</b> | :  |
| <b>PERSONNEL OF THE SERVICE</b>    | :  |
| <b>CONTACT</b>                     |  |
| <b>PHONE</b>                       | : 0312 837 76 72   |
| <b>FAX</b>                         | : 0312 837 73 38   |
| <b>E-MAIL</b>                      | : <a href="mailto:teknikservis@vitalmutfak.com">teknikservis@vitalmutfak.com</a> |



## CONTACT

**MUTAŞ ENDÜSTRİYEL MUTFAK SANAYİ TİCARET ANONİM ŞİRKETİ**  
**HEADQUARTER**

**ADRESS:** Plevne Cad. No:40 Gülveren / ANKARA

**PHONE:** (0312) 363 99 33 **FAX:** (0312) 363 94 92

**Web:** [www.vitalmutfak.com](http://www.vitalmutfak.com) **E-Mail:** [info@vitalmutfak.com](mailto:info@vitalmutfak.com)

**MUTAŞ ENDÜSTRİYEL MUTFAK SANAYİ TİCARET ANONİM ŞİRKETİ**  
**FACTORY**

**ADRESS:** Taşpınar Mahallesi Küme Evleri No:154/A 06760

**Çubuk / ANKARA-TURKEY**

**PHONE:** (0312) 837 76 72 **FAX:** (0312) 837 73 38

**Web:** [www.vitalmutfak.com](http://www.vitalmutfak.com)

**E-Mail:** [info@vitalmutfak.com](mailto:info@vitalmutfak.com)

## AFTER SALES SERVICE

For the nearest MUTAŞ/VİTAL Authorized Service, please  
contact the numbers above.

[info@vitalmutfak.com](mailto:info@vitalmutfak.com)

