



VITAL

USAGE AND MAINTENANCE MANUAL DISHWASHING MACHINE



VBY500C-P

PRESENTATION

DEAR CUSTOMERS,

- To get the best yield of our products that are in compliance with the International Standards, we highly recommend you to read the user's manual and have it read to your users for long and continuous usages.
- This manual contains important informations about the secure installation, usage and maintenance of the product and necessary remarks to make the most efficient usage of your device.
- Keep this manual in an easily accessible and safe place to use when necessary.
- The manufacturer cannot be held responsible for any damages from incorrect usage of the device, to people, the environment, or other materials resulting from translation or printing of this booklet.

SYMBOLS AND THEIR MEANINGS



READ THE MANUAL

Before using the device, read the usage and maintenance manual carefully and keep it in an accessible place at all times.



NOTE

Indicates informations and tips to consider for efficient and trouble-free operation of the appliance.



WARNING

Emphasizes the dangers that can cause injuries. Please follow carefully the instructions and pay attention to such situations.



ELECTRICAL DANGER

This icon draws attention to possible electrical dangers. Failure to follow the safety instructions may result in injury or death.



GROUNDING

Indicates that grounding is necessary.

INDEX

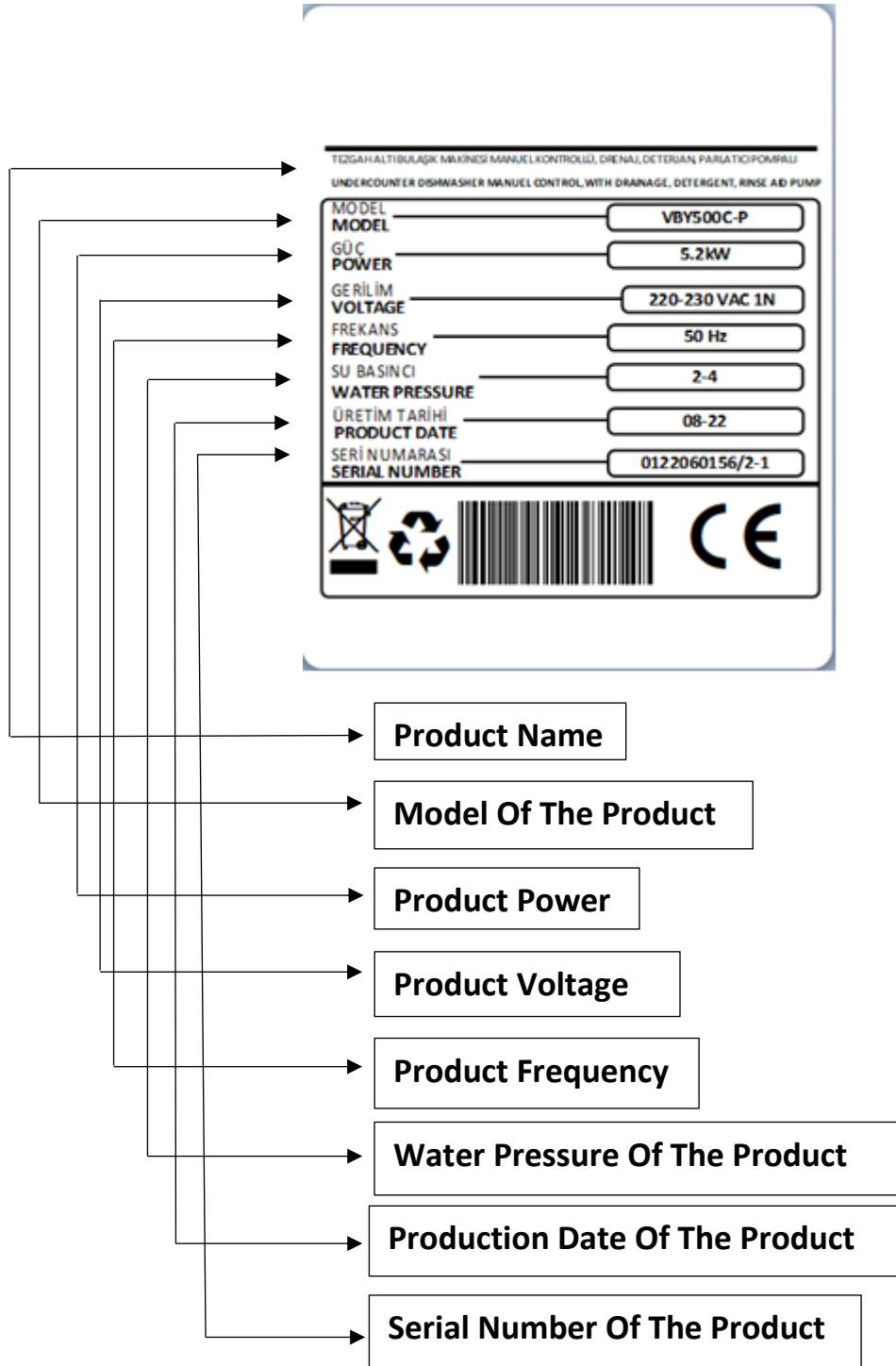
PRESENTATION.....	1
SYMBOLS AND THEIR MEANINGS.....	2
INDEX.....	3
SAFETY DETAILS.....	4
LABEL DETAILS.....	5
TECHNICAL SPECIFICATIONS.....	6
TRANSPORTATION, PLACEMENT AND READY TO INSTALL.....	8
ELECTRICAL CONNECTION.....	9
WATER CONNECTION.....	10
CONTROL PANEL.....	11
USAGE.....	11
USE OF DETERGENT AND POLİSHER.....	12
1-) SWITCHING ON	12
2-) SWITCHING OFF	13
CLEANING	13
MAINTENANCE AND MALFUNCTION	14
PROBLEMS AND SOLUTIONS	14
PERMANENT RISKS	15
THINGS TO BE DONE FOR DAILY, MONTHLY AND ANNUAL MAINTENANCE OF THE MACHINE	15
WARRANTY CONDITIONS	16
OUT OF WARRANTY CASES.....	17
ELECTRICAL CIRCUIT SCHEME	18
AUTHORIZED SERVICE START UP PAGE	19
START UP PAGE	19
İLETİŞİM / CONTACT	20

SAFETY DETAILS

- Do not expose the device to direct sunlight.
- The instructions should be analysed before the installation and the usage of the device.
- The device can only be used for professional purpose. The installation and the maintenance should be carried out by the qualified staff authorized by the manufacturer.
- It should not be interfered without the presence of the manufacturer or the authorized service.
- The device and its parts cannot be used for any other purpose.
- Never let the power cable come into contact with heat sources or sharp surfaces.
- The power cable must not be folded, bent or tangled and must always remain fully unrolled.
- Do not move or lift the appliance while it is operating.
- Do not place any object on the appliance.
- Never touch the plug with wet or damp hands.
- Do not interfere with the electrical parts of the device.
- In the event of a sudden power cut, unplug your device. To operate again, plug it back few minutes after the electricity is back. The high voltage that occurs when the electricity is back may damage the device and cause fire.
- The installation and the maintenance should be carried out by the qualified staff authorized by the manufacturer. Serious danger for the user can arise due to incorrect installations, maintenances or repairs, and the manufacturer cannot be held responsible.
- Do not wash the device with pressurized water.

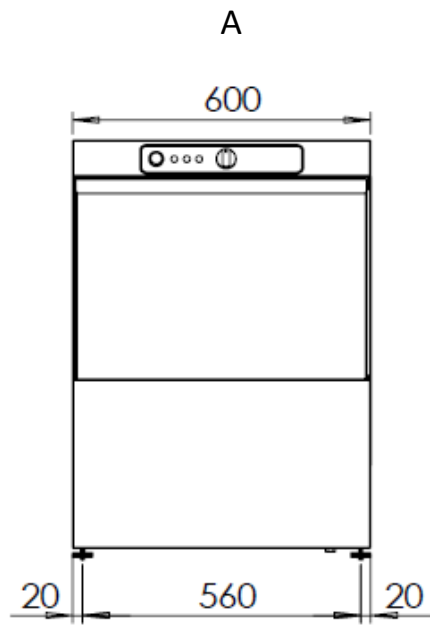


LABEL DETAILS

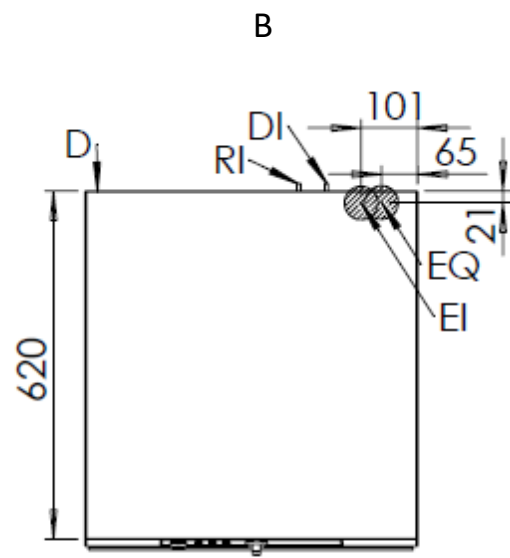


TECHNICAL SPECIFICATIONS

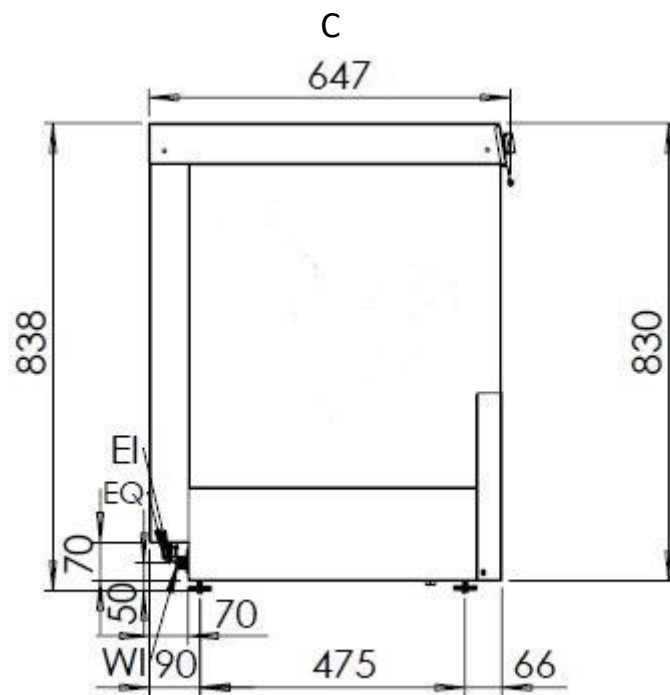
PRODUCT CODE			VBY500C-P
DIMENSIONS (Mm)	A	WIDTH	600
	B	DEPTH	645
	C	HEIGHT	830
ELECTRIC POWER			5,23 kW
BOILER HEATING POWER			4.5 kW
TANK HEATER POWER			3 kW
WASHING PUMP POWER			0,67 kW
RINSE PUMP POWER (OPTIONAL)			0,37 kW
DISCHARGE PUMP POWER			40 W
TANK VOLUME			21 L
BOILER VOLUME			6.5 L
WASHING WATER TEMPERATURE			55-60
RINSING WATER TEMPERATURE			80-85
WATER INLET			3/4"
WATER PRESSURE			2-4 bar
WATER HARDNESS			0-10 French hardness
CAPACITY			540 plates/hour
CABLE CROSS SECTION			3x6 mm ²
ELECTRIC INPUT			220-230 VAC 1N 50 HZ
WEIGHT			60 Kg



VBY500C-P



VBY500C-P



VBY500C

EI= ELECTRICAL CONNECTION DI=DETERGENT INLET

EQ= GROUND CONNECTION RI=RINISHER INLET

WI=WATER INLET D=DRAINAGE

TRANSPORTATION, PLACEMENT AND READY TO INSTALL

- Do not tilt the device during the transportation, carry it upright.
- Use a suitable vehicle to avoid any kind of damages.
- Do not push or drag the device to bear.
- When transporting by pallet jack or forklift, make sure to not damage the device.
- Carry the device with its packaging until the installation area.
- The device must be installed in accordance with the instructions.
- An electrical connection in accordance with the technical specifications of the device must be installed in the installation area.
- A water connection in accordance with the technical specifications of the device should be established in the installation area.
- Make sure that the product installation area is a flat surface. In case of installation on uneven floors, the product will not be able to receive water properly.

What's included inside the package?

- 1 50x50 dishwasher plate basket
- 1 50x50 dishwasher glass basket
- 1 drain hose (should be connected by the service.)
- 1 clean water inlet hose (should be connected by the service.)
- 1 usage and maintenance manual



Please observe the regulations in your country if you wish to dispose of the packaging. Recycle the usable packaging.

ELECTRICAL CONNECTION

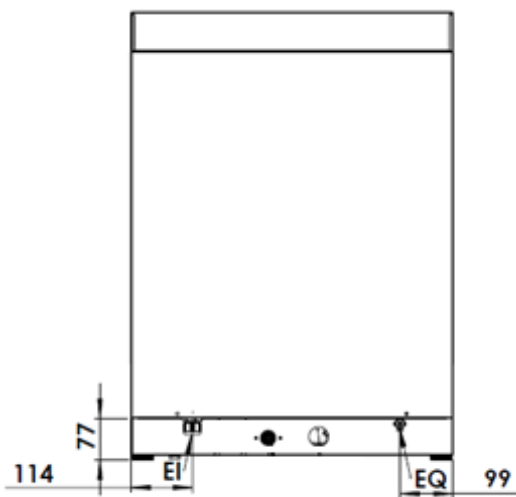
- Technical specification section should be analysed for the appropriate cable to be used for the electrical connection of the device.
- Supply the device with the mains voltage indicated on the nameplate.
- The electrical supply circuit must be done by authorized staff. Before installation, make sure that your fitment meets the requirements. The device should absolutely not be used without grounding.
- The electrical voltage must be stable for the proper function of the device. If the malfunction is caused by the voltage, the replacement of these parts are considered “out of warranty”. Fault detection is based on the service declaration.
- To prevent the device from any short circuit and overcurrent, the device must be supplied with the appropriate fuse control.



Do not operate the device without grounding.



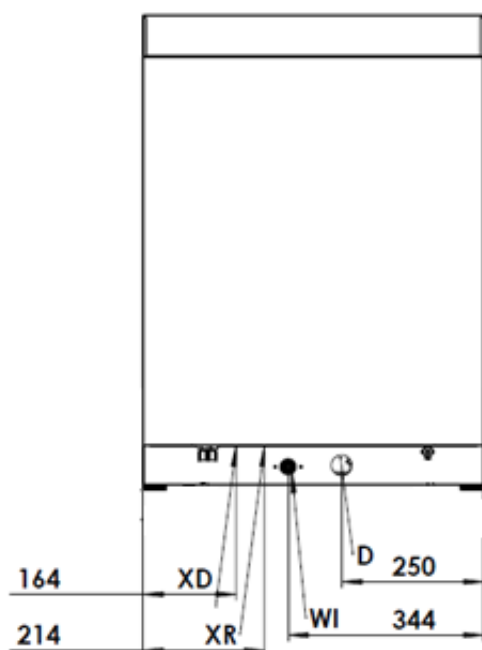
The power line to be connected to the device must have a suitable grounding connection and cross section.



EI: ELECTRIC INLET

EQ: GROUNDING

WATER CONNECTION

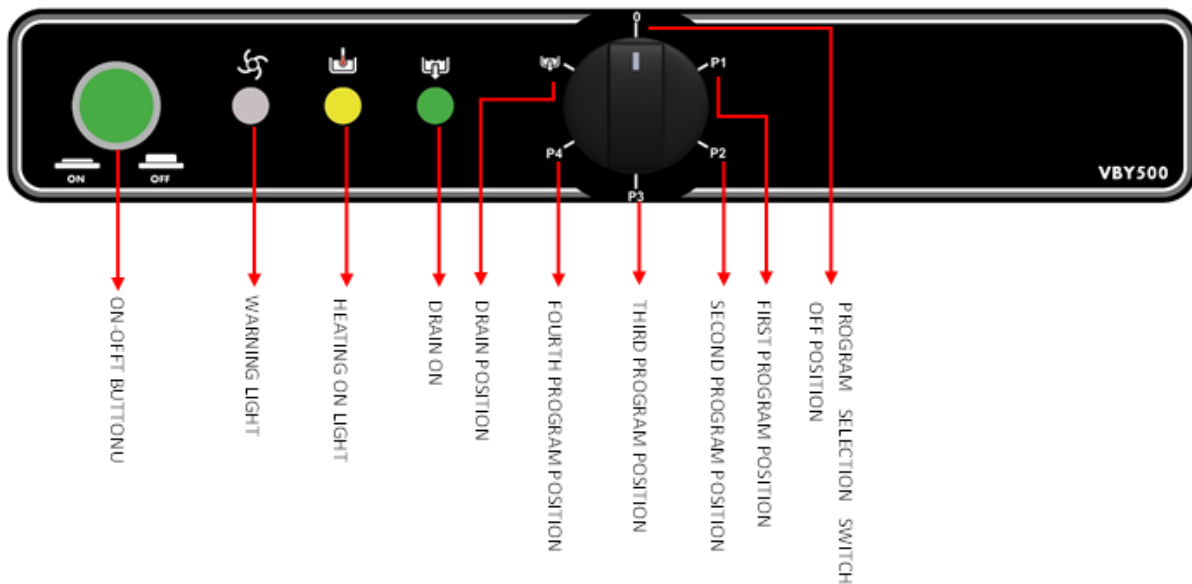


WI: WATER INLET
 XD: DETERGENT INLET
 XR: RINSE INLET
 D: DRAIN

- Make the connection suitable for the water inlet located on the back of the device.
- To operate at the best performance, the water inlet pressure should be 2-4 bars and 0-10 French hardness.
- If your device is subjected to a pressure below the recommended working pressure, the water filling will be slow and the rinsing will not be done properly.
- Improper water hardness will cause calcification and damage the machine. In addition, the required cleaning performance will not be achieved.
- There must be a water drain on the area where the device will be connected.

Measured Pressure Value	Action to be Done
Between 0 – 2 bars	Hydrophore must be installed.
Between 2 – 4 bars	No additional action is required.
4 bars and over	Pressure regulator should be installed.

CONTROL PANEL



USAGE

- The device is designed for Professional usage and should only be used by trained personnel.
- If the detergent and rinse pump connections are made properly, the device will automatically take detergent and rinse in each wash.

PROGRAM NUMBER	PROGRAM DURATION
P1	106 SECOND
P2	136 SECOND
P3	156 SECOND
P4	176 SECOND



Pre-washing of the dishes must be done before being put in the machine. Otherwise, large pieces may block the drain and will affect the washing quality.

- Make sure to use baskets suitable for the type of dishes to be washed.
- If the machine door is opened during washing or rinsing, the washing process will stop.
- If the machine door needs to be opened during operation, do not open it suddenly, otherwise hot and detergent water may harm the user.



Never operated the machine if the crumb stainers are not mounted. Washing water should be renewed at least 3 times a day. Washing with dirty water will result a bad wash and will waste the energy.

- Before operating the device, check the detergent and rinse aid reservoirs.

Use of Detergent and Polisher

- The hose coming out of the detergent pump should be connected to the washing tank at the back of the machine. The adjustment of the detergent pump must be done by authorized persons. The adjustments should not be changed. The adjustment to be made by unauthorized persons may increase the consumption of detergent and cause the dishes to come out of the machine with detergent and dirty appearance.
- The hose coming out of the rinse aid pump must be connected to the rinse aid inlet on the boiler.
- If the detergent setting is low, it will cause the dishes not to come out with the desired cleaning.

1-) Switching On

- Turn on the fuse to which the device is connected.
- Open the water inlet tap.
- Close the door of the device. The device will start to receive water after the door is closed.
- The device will first heat the boiler water up to 80-85°C. This may be observed by the heating lamp located on the control panel. When the boiler water warmin is completed, the lamp will turn off.
- When the boiler water reaches the temperature, the boiler will heat up to 55-60°C.
- Select the program with the selection switch.
- After selecting the program and closing the door, the washing process will start and will take time as the selected program duration.
- In order to drain the boiler water, turn the Program selection switch to the drain position. While the drain pump is running, the drain lamp will light on the control panel.



When the device is turned on, it will fulfill the preliminary conditions (boiler warming) and the washing process will start. For the next washes, the washing period will extend until the boiler temperature reaches 85°C. During the extended time, the Warning lamp will turn on for 2 seconds and give a warning. If the boiler does not reach 85°C at the end of 7 minutes, the machine will rinse.

2-) Switching Off

- Turn the selection knob to the “0” position.
- Turn off the device with the ON-OFF switch.
- Turn off the water inlet tap.
- Turn off the fuse to which the energy supply is made for your safety.

CLEANING

Cleaning of the external part

- Disconnect the device from the wiring before cleaning.
- When cleaning the device, make sure to prevent water from entering in the electrical parts.
- Do absolutely not wash your device with a hose or anything similar. This may cause damage to the electrical wiring. In such case, danger may occur and your device will be out of warranty.
- Clean the exterior of the machine regularly. You may use soapy warm water.
- Do not use abrasive detergent or wire brushes when cleaning the device's surface.

Cleaning of the internal part

- Remove the wash arms, rinse the wash arms under water if there is any clogging.
- Clean the interior of the machine with a sponge and brush. If necessary, you can wash the machine interiors with a hose.
- Clean the filters in front of the pump suction with a brush.
- Re-insert the strainer elements.
- Re-insert wash arms.



Read the instructions before turning the device on and off.

MAINTENANCE AND MALFUNCTION

- All connections and repairs must be carried out by the authorized service centers, otherwise, your device will be out of warranty.
- All connections and repairs must be done by the Authorized Service. Otherwise, your device will be done out of warranty.

Problems and Solutions

PROBLEM	SOLUTION
The wash tank does not heat	Make sure that the fuse to which the main power supply is made is on. Check if the ON-OFF button is pressed. Check if there is water in the tank. If the device does still not heat, please contact the <u>AUTHORIZED SERVICE.</u>
The device is not receiving water.	Check if the tap to which the water connection is made is open. Check if the ON-OFF button is pressed. If the device does still does not receive water, please contact the <u>AUTHORIZED SERVICE.</u>
The water receiving is too slow.	Make sure that the tap of the water connection is fully open. Check that the rinsing arms are not blocked. Check if the water hose is secured.
The device receives water continuously.	There is a problem with the device water level measurement system. Please contact the <u>AUTHORIZED SERVICE.</u>
The warning lamps blink every second.	The device did not receive enough water. Check the water pressure. If the water pressure is normal and the blinkings continue, please contact the <u>AUTHORIZED SERVICE.</u>
The device does not operate although the start button is pressed.	Make sure that the fuse with which the main power supply is made is on. Check if the device ON-OFF button is pressed. Make sure that the device cover is closed. If the device still does not operate, please contact the <u>AUTHORIZED SERVICE.</u>



NOTE

Please contact the authorized service in case of malfunction.

PERMANENT RISKS

The machine has certain risks that cannot be eliminated by design or by the installation of adequate protection devices. Permanent risks are listed below for full customer information. It is therefore strictly forbidden to do it within these risks.

PERMANENT RISKS	EXPLANATION
Slip and Fall	The technician may slip and fall due to dirt and water on the floor.
Burns	It occurs when the technician consciously or unconsciously touches the area with a hot surface warning and tries to pick up the trays without gloves.
Electric Shock	It occurs due to maintenance without cutting off the electricity and placing the product on a wet floor.
Chemical	It occurs as a result of contact with chemical substances without taking adequate precautions. To prevent this situation, the safety cards and labels of the products should be read. (Chemical substance: Detergent, rinse aid, etc.)

THINGS TO BE DONE FOR DAILY, MONTHLY AND ANNUAL MAINTENANCE OF THE MACHINE

DAILY

- 1) General cleaning of the machine and the surrounding area is required.

MONTHLY

- 1) Parts of the devices should be checked, loosened and deformed ones should be tightened or replaced.

YEARLY

- 1) Mechanical parts should be checked for breakage and deformation.
- 2) The legibility of labels and symbols should be checked.
- 3) Connection cable and plug are damaged, rotten, broken, etc. Things should be checked for.

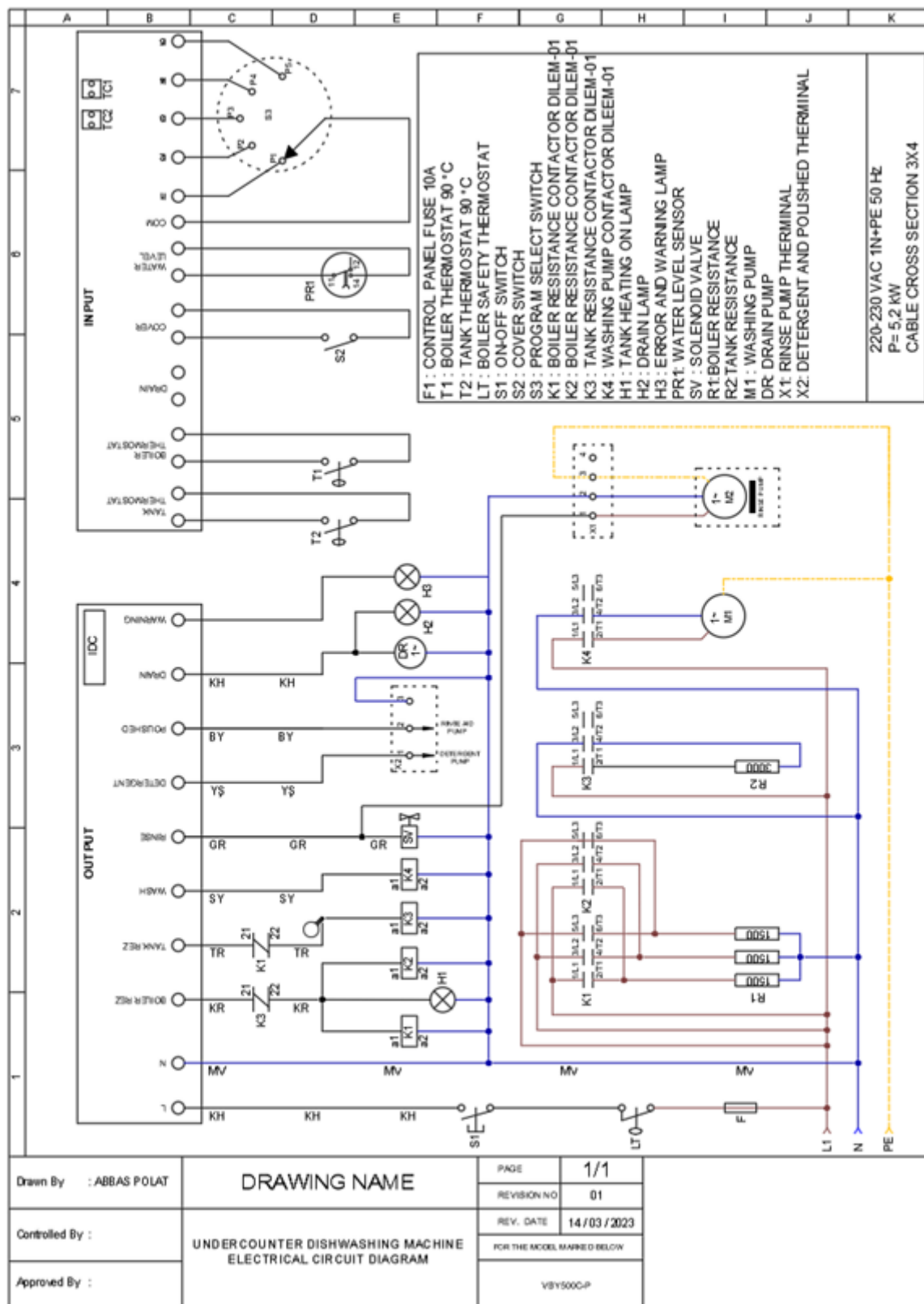
WARRANTY CONDITIONS

- According to the consumer rights law and commercial law of the Ministry of Industry, except in a special case of agreement, sold industrial products by our company has one (1) year of warranty and that period starts from the delivery date of the product.
- The warranty includes all the components of the device against fabrication or faulty workmanship, eliminations of the problems or malfunctions of the device caused by the workmanship and installation errors, replacement of non-repairable parts or the mending of repaired parts that can be reused. It also includes repairings or changes of the components by the authorized personnel, or the labor fee due to the problem under the warranty.
- In order for the warranty conditions to be valid, the maintenance of the components fixed to the device, the maintenance of the product, as indicated in the user's manual, should be done yearly and monthly and the information form must be held after the maintenance to be presented when required.
- The document of the replacement of the component has to be presented for warranty claim parts.
- In order to sustain the warranty period, the paid periodic maintenance has to be done by the authorized service and the information form must be held to be presented when required.
- In case of the malfunctions under the warranty period, the time spent in the repairment of the device is added to the warranty period. The repair can be maximum 30 (thirty) days. This period starts when the device is on the service station. In case of the absence of this situation, the period will start when the manufacturer or the importer is notified by the product seller.
- In accordance with the regulations of the warranty document implementation fundamentals published by the Ministry of Industry, the warranty deed of the industrial products are the purchase invoices.
- If there is any kind of malfunctions due to both the material and the workmanship, or assembly faults under the warranty period, the necessary replacement and repairing will be done by our authorized personnel without any charge.

OUT OF WARRANTY CASES

- If the product is used above its intended purpose, standards or capacity specified by the manufacturer.
- In case of the bad locationing of the product, continuous usage and unhealthy environment (ex: required ventilation), not suitable floor or flat platform, lack of convenient electrical connection,
- If the product has not been used as explained in the instruction manual,
- If the fault is caused by inconvenient, wrong or careless usage,
- If the malfunction is caused by fluctuations in the mains power, a stroke or a meteor lightening, a fire, a flood, an earthquake or similar cases,
- If the special tools and equipments installed or the maintenance and repair are made by any other person than the authorized person,
- When requesting a service, if the installation-start documents or purchase invoices of the products are not presented,
- If the informations on the documents of the installation, start or maintenance has been destroyed or changed,
- If the paid annual or the contractual periodic maintenance of the product has not been done on time by the authorized personnel,
- If unoriginal spare parts have been used,
- Notifications to our authorized services under the warranty period about the malfunctions that could not have been repaired, will make the time-out of the warranty stop only for that specific malfunction. In this case, the authorized service will inform about the compensation or the non-troubleshooting and the expanded warranty period will end in 3 months in any cases,
- All parts that may be abraded in time such as gaskets, electronic card, doorhandle and mechanism, serigraphy product tag, cables, resistance etc will be replaced in exchange of a fee.
- Damages caused by the unnecessary loss of time, the maleficence, the revenue loss, or the conduction of the product from the defective location to another,
- Malfunctions of the product due to squalidity are not covered by the warranty,
- The methods to be followed about the fault detection and elimination are determined completely by MUTAŞ's technical service management and the service matter is taken as basis for the determination of the malfunction.

ELECTRICAL CIRCUIT SCHEME



AUTHORIZED SERVICE START UP PAGE

Start Up Page

- The model and serial number of your device are shown on the “Technical Data” label affixed to the device.
- Select the technical data according to the device model on the nameplate.

MUST BE FILLED BY AUTHORIZED SERVICE!

COMPANY INFORMATION	:
PRODUCT	:
MODEL	:
SERIAL NUMBER	:
PRODUCTION DATE	:
SERVICE STAMP AND SIGNATURE	:
PERSONNEL OF THE SERVICE	:
CONTACT	
PHONE	: 0312 837 76 72
FAX	: 0312 837 73 38
E-MAIL	: teknikservis@vitalmutfak.com

İLETİŞİM / CONTACT

MUTAŞ ENDÜSTRİYEL MUTFAK SANAYİ TİCARET ANONİM ŞİRKETİ
MERKEZ / HEADQUARTER

ADRES: Plevne Cad. No:40 Gülveren / ANKARA

TEL: (0312) 363 99 33 FAX: (0312) 363 94 92

Web: www.vitalmutfak.com E-Mail: info@vitalmutfak.com

MUTAŞ ENDÜSTRİYEL MUTFAK SANAYİ TİCARET ANONİM ŞİRKETİ
FABRİKA / FACTORY

ADRES: Taşpınar Mahallesi Küme Evleri No:154/A 06760
Çubuk / ANKARA-TURKEY

TEL: (0312) 837 76 72 FAX: (0312) 837 73 38

Web: www.vitalmutfak.com
E-Mail: info@vitalmutfak.com

SATIŞ SONRASI SERVİS HİZMETLERİ

**Size en yakın MUTAŞ/VİTAL Yetkili Servis'i öğrenmek için,
yukarıdaki irtibat numaralarına başvurabilirsiniz.**

AFTER SALES SERVICE

**For the nearest MUTAŞ/VİTAL Authorized Service, please
contact the numbers above.**

info@vitalmutfak.com

